

# KVM-RK32C01P

## 32 Port CAT5 KVM over IP Switch 1-Local/1-Remote Access



### Introduction

The KVM-RK32C01P 1-Local/1-Remote Access Cat 5 KVM over IP Switch is ideal for your IT systems, no software needed, no complicated installation procedures, and no compatibility issues. Featured with built-in IP remote access, it allows you to access your connected servers over the local network or Internet. Multi-user mode allows 1 local and 1 remote user to access connected servers concurrently. It allows secure access to 16 computers from a single KVM console. Connect computers with compact RJ-45 connectors and Cat 5e/6 cable, transmitting distance is up to 100m.

### Local Console

Control up to 32 computers  
Support 1 local user and 1 remote user, port share mode allows local and remote users to gain access to a server simultaneously  
Easy-to-use switching by browser-based UI interface, hotkeys and pushbuttons  
Support servers with VGA/DVI/HDMI port  
Multiplatform client support (Windows, Linux, Unix, Mac, Solaris (Sun), Redhat, Ubuntu)  
Local Console, Browser, and AP GUIs offer a unified Multilanguage interface  
Support mouse synchronization mode-automatically synchronizes the local and remote mouse movements  
Video synchronization with local console - EDID information for local console display can be stored in the host module for video resolution optimization  
Keyboard and mouse emulation to ensure the normal booting  
Auto scan feature for monitoring user-selected computer  
Hot pluggable-add or remove computers without having to power down the switch

### Remote Console

Adaptive 10 / 100 / 1000 Mbps network  
WEB browser-based remote management  
BIOS-level access  
Video quality and video tolerance can be adjusted to optimize data transfer speed, data transfer speed is up to 30 FPS  
Full screen or scalable video display  
Remote users and local users can control the same server/computer synchronously  
Support AES / DES / 3DES encryption  
Support audit function-allows the administrator to audit the device through the system log and operation log  
Exit Macros support  
Configurable user and group permissions for server access and control  
Message Board for communication among remote users  
Support strong password  
Support firmware upgrade

Specification		RK32C01P	
<b>Model</b>	RK32C01P		
<b>Computer Connection</b>	32		
<b>Port selection</b>	Pushbutton, OSD menu, Web		
<b>Connector</b>	Console	Keyboard Mouse	2x USB TYPE A
		Monitor	1-HDB-15 Female(blue)
	KVM Port (RJ-45)		32
	Upgrading switch		1x RJ11 Female
<b>Switch</b>	Power		3-Prong AC socket
	Port Selection		32 LEDs
	Reset		1x touch-button
	Upgrading switch		1x toggle switch
<b>LEDs</b>	Power		1x rocker switch
	Online		32 (green)
	Selected		32 (orange)
	Power		1(blue)
<b>Remote</b>	Cascade display		2x 7- Segment (orange)
	Remote control		KVM control ( ActiveX control )
	Management way		Web
	Security		DES encryption
<b>I/R Value</b>	Resolution		1920x1080@60Hz
			100V - 240Vac, 50 ~ 60Hz, <1.5A
<b>Power Consumption</b>	10W		
<b>Environment Requirements</b>	Operating Temperature	0 - 50°C	
	Store Temperature	-20 - 60°C	
	Humidity	0 - 80%RH, non-condensing	
<b>Physical Features</b>	Material	SECC	
	Weight	3.0kg	
	Dimension	433 x 171 x 44.5mm	

### Features

- Rack-mountable in 1U system rack
- Control up to 32 Computers
- 1 Local and 1 Remote User
- Multiplatform client support (Windows, Linux, Unix, Mac, Solaris (Sun), Redhat, Ubuntu)
- Dual power supply

### Packaging Content

- 1x KVM-RK32C01P KVM over IP console
- 8/16/32x USB KVM Dongle-1200U
- 2x Mounting Rails
- 1x Shield Network Cable
- 1x Power Cord
- 1x Ground Wire
- 1x Quick Start Guide
- 1x User Manual

### Ordering Information

**KVM-RK32C01P** 32 Port CAT5 KVM over IP Switch 1-Local/1-Remote Access

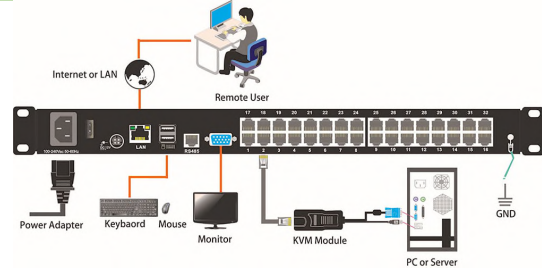
### Optional

Dongle-1200U Adapter for CAT5 KVM Consoles (USB)

### Rear



### Connection Diagram

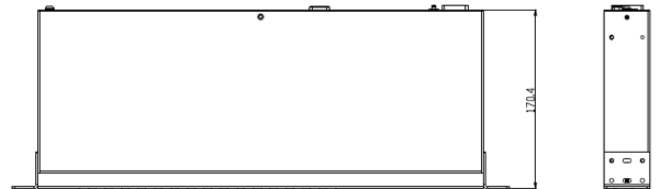
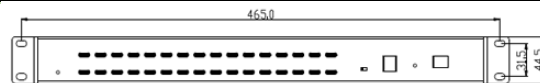


### Cables



Dongle-1200U

### Dimension



SINETIC Technologies Inc, reserves the right to change or update without notice, any information contained herein; to change without notice, the design construction, materials, processing or specifications of any products and to discontinue or limit production or distribution of any products. © 2020 SINETIC Technologies Inc. All rights reserved. DMKVM-RK32C01P Rev 1.0 Dated 202004.