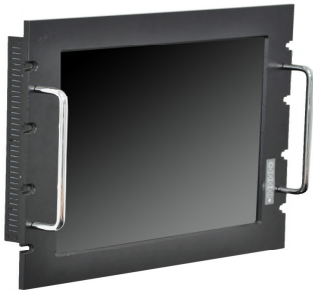


# I-View RK-150R3

Industrial 15" TFT Rack Mount LCD Monitor with optional Resistive Touch Screen or Anti Reflective Glass Protection



## FEATURES

- 15" TFT LCD Panel Display
- High MTBF Backlight up to 30000hrs@ 25°C
- Input Interface: VGA/DVI
- Front Bezel Compliant with IP65 sealing
- Front Bezel Aluminium and Chassis Steel Material
- Mounting Options: Rack Mount or VESA Wall Mount
- Power Input: 12V DC Input, 48W AC/DC Power Adapter
- Optional Resistive 5 wire Touch screen or Anti Reflective Glass Protection

## Introduction

I-View RK-150R3 Industrial Rack Mount TFT LCD Monitor with optional Resistive Touch screen or Anti-Reflective Glass Protection. I-View RK-150R3 offers three different types of input options for different applications.

I-View RK-150R3 is ideal for developing KIOSK, Industrial Test Equipment, Industrial Control systems, Hospital Display, Marine, Defence and ATMs.

## Specification

LCD	
<b>Model</b>	<b>RK-150R3</b>
LCD Size	15"
Resolution	1024 x 768
Brightness	350 cd/m2
Contrast Ratio	700:1
Viewing Angle	170/160
Backlight	LED
Backlight MTBF	30000Hrs
LCD Color	16.2M./ 262K
Pixel Pitch (mm)	0.297
Front Frame Material	Aluminium
Chassis	Steel
OSD Function	Yes
Mounting	Rack Mount/VESA
Colour	Black
Input Interface	
Input Signal	VGA/DVI
Touch screen	
Touch screen Type	5 Wire Resistive
Touch screen Controller	USB/RS-232
Power Requirement	
DC Input	12V
Power Supply	48W AC/DC Power Adapter
Mechanical & Environment	
Dimension	484(W) x 311.5(H) x 60.3(D) mm
Weight	Gross 5.5kg
Operation temperature	0°C to 60°C (32° F to 140° F)
Storage temperature	-20°C to 80°C (-68° F to 176° F)
Relative humidity	5% to 95% (Non-Condensing)
Vibration	5-17Hz 0.1" double amplitude displacement 17-640Hz 1.5G Acceleration peak to peak
Shock	10G acceleration peak to peak (11ms)
Front Bezel protection	IP65 Compliant
Ordering Information	
RK-150R3D1B-C100	Industrial 15" TFT 350cd/m <sup>2</sup> Rack Mount LCD Monitor with Anti Reflective Glass Protection/VGA/DVI Input
RK-150R3D1B-C101	Industrial 15" TFT 350cd/m <sup>2</sup> Rack Mount LCD Monitor with 5-Wire Resistive Touch Screen (USB)/VGA/DVI Input
RK-150R3D1B-C102	Industrial 15" TFT 350cd/m <sup>2</sup> Rack Mount LCD Monitor with 5-Wire Resistive Touch Screen (RS-232)/VGA/DVI Input

## Dimension

